

Pastoral Prayer and the Lord’s Prayer

Our Father who art in heaven, hallowed be thy name.
Thy kingdom come, thy will be done, on earth as it is in heaven.
Give us this day our daily bread;
And forgive us our debts, as we forgive our debtors;
And lead us not into temptation, but deliver us from evil.
For thine is the kingdom and the power and the glory, forever.
Amen

Giving and Receiving

Offertory.....*For Beauty of the Earth*
ARR. PHILLIP KEVEREN

*Doxology and Prayer of Dedication

Praise God, from whom all bless-ings flow. Praise God, all crea-tures

high and low. Al - le - lu - ia, al - le - lu - ia! Praise

God, in Je - sus ful - ly known: Cre - a - tor, Word, and Spir - it

one. Al - le - lu - ia, al - le - lu - ia! Al - le -

lu - ia, al - le - lu - ia, al - le - lu - ia!

*Hymn 803..... *My Shepherd Will Supply My Need*

1 My shep-herd will sup - ply my need; Je - ho - vah is his name.
2 When I walk through the shades of death your pres-ence is my stay;
3 The sure pro - vi - sions of my God at - tend me all my days;

In pas - tures fresh he makes me feed, be - side the liv - ing stream.
one word of your sup - port - ing breath drives all my fears a - way.
O may your house be my a - bode, and all my work be praise.

He brings my wan-dering spir - it back when I for - sake his ways,
Your hand, in sight of all my foes, does still my ta - ble spread;
There would I find a set - tled rest, while oth - ers go and come;

and leads me, for his mer - cy's sake, in paths of truth and grace.
my cup with bless-ings o - ver - flows; your oil a-noints my head.
no more a strang-er, or a guest, but like a child at home.

Benediction

* Benediction Response

Postlude.....*Joyful, Joyful*
ARR. CINDY BERRY

*All Who Are Able Please Stand | + Ushers Will Seat Latecomers

WELCOME & ANNOUNCEMENTS

WELCOME to all who join us for worship today. If you are without a church home, you will be warmly welcomed into our fellowship. We are glad you are here! Please like us on Facebook and visit our website at www.firstpresbeaufort.org for sermons, news, and current events.

TODAY THE FLOWERS ARE GIVEN by the Antinori Family in memory of Dr. Pete Mowlajko and his birthday on October 17.

Nursery Care
is available every Sunday morning

Our two experienced nursery staff are happy to care for your little one during the worship service.

Age: 3 months- 2 years
Location: 1st Floor Education Building (across the street)
Time: 10:45-12:15

First Presbyterian Church of Beaufort

A Service for the Worship of God
October 15, 2023
11:00 AM



To all who are weary and need rest,
To all who mourn and need comfort,
To all who are lonely and need friendship,
To all who are glad and would serve their neighbors,
To all who are complacent and need disturbing,
To all who sin and need a Savior,
This church opens wide its doors
In the name of Christ and bids you welcome.

Sanctuary: 410 Church Street
Office, Education & Outreach Building: 1201 North Street
firstpresbeaufort.org 843-524-3051
www.facebook.com/firstpresbeaufort info@firstpresbeaufort.org



Striking of the Hour

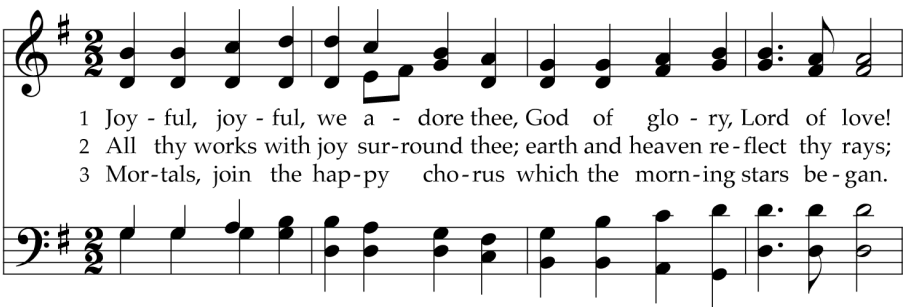
Prelude.....*Jesus, the Very Thought of Thee*
ARR. CINDY BERRY

Choral Introit

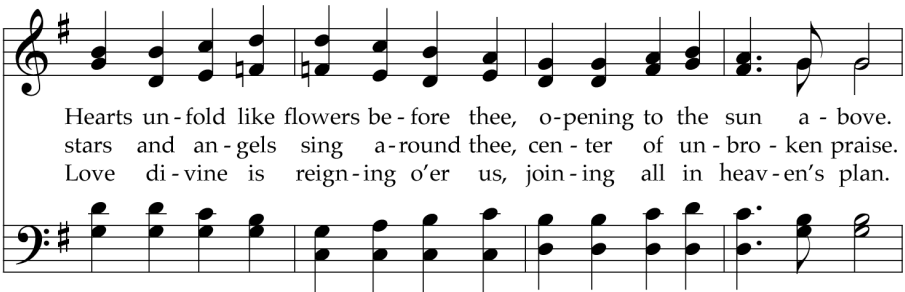
*Welcome & Call to Worship Elder Geneva Baxley

The Lord is our Shepherd
We want for nothing.
God takes us to green meadows
And leads us to settled waters
God gives us life and guides our path
Even through darkness and death.
We have no fear because You, O God are with us.
You guard and guide and comfort and carry.
You set a table of welcome even before our enemies.
You revive our spirits and fill our cups.
Your goodness and faithful love chase us
And forever we will live
Under the roof of your house and home.

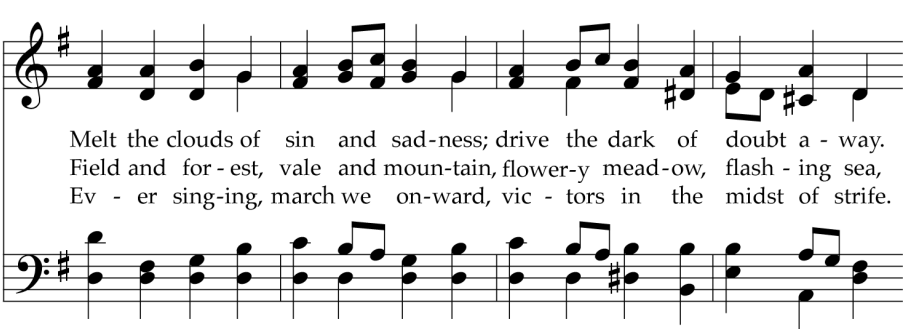
+*Hymn 611..... *Joyful, Joyful, We Adore Thee*



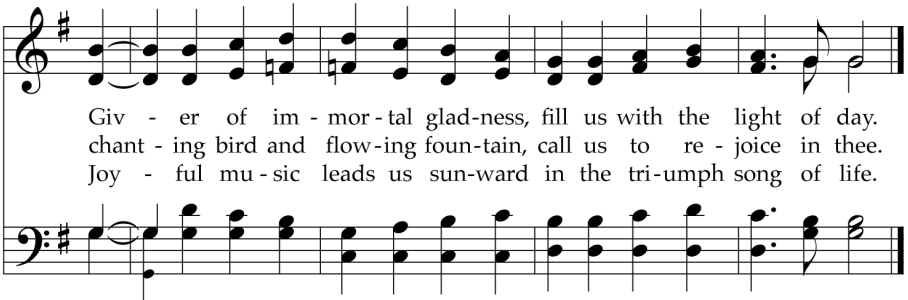
1 Joy - ful, joy - ful, we a - dore thee, God of glo - ry, Lord of love!
2 All thy works with joy sur-round thee; earth and heaven re-flect thy rays;
3 Mor-tals, join the hap-py cho-rus which the morn-ing stars be-gan.



Hearts un-fold like flowers be-fore thee, o-pening to the sun a-bove.
stars and an-gels sing a-round thee, cen-ter of un-bro-ken praise.
Love di-vine is reign-ing o'er us, join-ing all in heav-en's plan.



Melt the clouds of sin and sad-ness; drive the dark of doubt a-way.
Field and for-est, vale and moun-tain, flower-y mead-ow, flash-ing sea,
Ev-er sing-ing, march we on-ward, vic-tors in the midst of strife.



Giv - er of im - mor - tal glad-ness, fill us with the light of day.
chant - ing bird and flow-ing foun-tain, call us to re - joice in thee.
Joy - ful mu - sic leads us sun-ward in the tri-umph song of life.

Prayer of Confession

Merciful God, in Jesus you show us the way of humility and generosity, but we follow our pride and hoard our blessings. You teach us to seek the good of others, but we confess that we go our own ways and elevate ourselves. Free us from selfishness. Forgive us for greediness. Repair our self-centered hearts. Help us to trust your provision and share what we have.
(Let us continue in prayer silently.)

Congregational Response

Hear our prayer, O Lord. Hear our prayer, O Lord.
Incline thine ear to us and grant us thy peace. Amen.

Assurance of Pardon

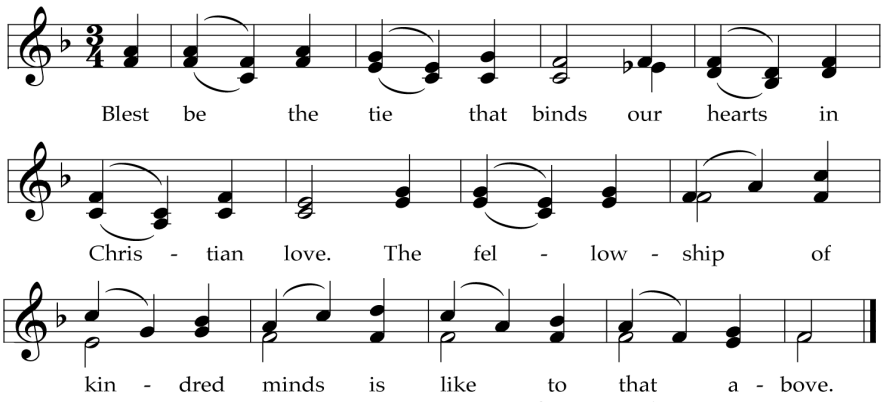
*Gloria Patri

Glory be to the Father, and to the Son, and to the Holy Ghost;
As it was in the beginning, is now, and ever shall be,
World without end, Amen, Amen.

Anthem..... *This is the Day*
Vic Varner, Music Director W.A. MOZART
Jordan Plair, Organist

Children’s Sermon Geneva Baxley
As we sing *Jesus Loves Me*, all children are welcome to come down front.

Passing of the Peace



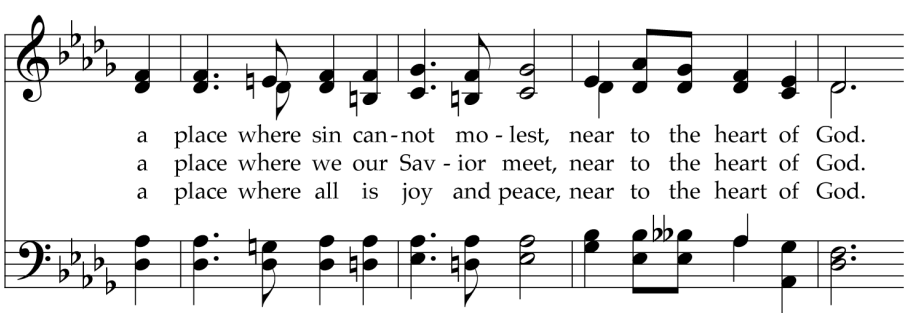
Blest be the tie that binds our hearts in
Chris - tian love. The fel - low - ship of
kin - dred minds is like to that a-bove.

Prophecy Lesson..... Isaiah 25:1-9

Hymn 824 *There is a Place of Quiet Rest*



1 There is a place of qui - et rest, near to the heart of God,
2 There is a place of com - fort sweet, near to the heart of God,
3 There is a place of full re - lease, near to the heart of God,



a place where sin can-not mo - lest, near to the heart of God.
a place where we our Sav - ior meet, near to the heart of God.
a place where all is joy and peace, near to the heart of God.



Refrain
O Je - sus, blest Re-deem - er, sent from the heart of God,



hold us, who wait be - fore thee, near to the heart of God.

Epistle Lesson Philippians 4:1-9

Sermon **Be Anxious For Nothing**
Dr. Patrick Perryman

*Apostles’ Creed

I BELIEVE in God, the Father Almighty, Maker of heaven and earth,

And in Jesus Christ, his only Son, our Lord; who was conceived by the Holy Ghost, born of the Virgin Mary, suffered under Pontius Pilate, was crucified, dead, and buried. He descended into hell; the third day he rose again from the dead; he ascended into heaven and sitteth on the right hand of God, the Father Almighty; from thence he shall come to judge the quick and the dead.

I believe in the Holy Ghost, the holy catholic church, the communion of saints, the forgiveness of sins; the resurrection of the body, and the life everlasting. Amen.

Neighborhood Outreach Connection



Snacks Needed:
Individual cookie pack
Soft granola bars
Nutri-grain bars
Fruit snacks

Place snacks in the **Red Wagon** in the Education Bldg.

We are called to serve our neighbors

Fourth Fridays

Washington Street Park Suppers

A simple meal with a big impact.

Sign up to serve & a member of our outreach team will contact you with details



scan me



You are invited to participate in **The Monday Bible Study Group**. We will begin a new study on **October 30** with Dr. Amy-Jill Levine's The Difficult Words of Jesus. The discussions will take place in 7 sessions (Oct. 30-Dec. 11) in the Education Building from **6:00-7:30 PM**. The study is **open to any adult** interested in Bible related topics. The text is 150 pages, 6 chapters of about 25

pages each supplemented by some Bible reading and weekly video presentations by the author, a faculty member at the Vanderbilt University School of Divinity. New and used copies of the text are available at a variety of on-line sites and book sellers. There is also an audiobook version of the text. To join the group email Bert Owen at **bandbert@gmail.com**. If you have questions contact Rob Cooper, Bert or Dr. Perryman. We hope you will join us.



CONFIRMATION PROJECT

The youth are preparing a space for the Middle and Highschool kids of Beaufort to engage with God in new and exciting ways. We are looking for donations of the following:

- A 36' wide rectangular table that can seat 6 with 6 matching chairs.
- 2 large upholstered chairs
- oversize pillows and sheepskin throws
- 2 floor lamps
- religious relics of any sizes
- rustic bowls
- parchment paper, any kind of craft paper or interesting paper.
- fabric scraps, yarn, ribbon
- an 8x10 foot rug
- 2 x 3 foot high bookshelves
-

If you are interested in donating items please text Ellie at 310-383-9245.

Men's Breakfast



FIRST AND THIRD
WEDNESDAY

7:30-8:30 am

FELLOWSHIP HALL
GUESTS WELCOME

MENTAL HEALTH AWARENESS:

AWAKENING THE SPIRIT IN US TO BECOME MORE COMPASSIONATE.

"Mental pain is less dramatic than physical pain, but it is more common and also more hard to bear. The frequent attempt to conceal mental pain increases the burden: it is easier to say 'My tooth is aching' than to say 'My heart is broken.'"

- C.S. Lewis



First Presbyterian
Church of Beaufort



12th Annual Nativity Celebration

December 1-2 10am-4pm

December 3 12-3pm

All are welcome for this free community event celebrating the Christmas story with more than 125 nativities from around the world.

Historic Downtown Beaufort

1201 North Street

WHAT IS A PRESBYTERIAN WOMAN?

God borrows from many creatures to make a *Presbyterian Woman*. God takes the voice of a meadowlark, the stubbornness of a mule, the curiosity of a cat, the spryness of a grasshopper and the strength of a pack horse to create a *Presbyterian Woman*.

A *Presbyterian Woman* can be found anywhere. She can be found in the church choir. She might be found in the church kitchen. She's often found in the church office, and on Sundays she will be found in the Sunday School program. She is also found in board rooms, behind a cash register, or at a school P.T.O. function. She quilts, bakes, knits, and volunteers at the hospital. She even bowls!

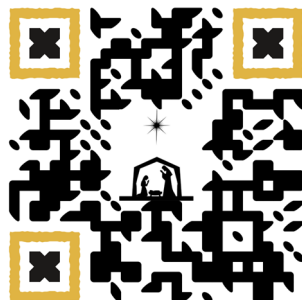
A *Presbyterian Woman* is comfort with a casserole in her hand. She is service cleaning up after a luncheon. She is compassion with a pledge card in her purse. She is friendship with a cheerful smile on her face and she is very hungry for knowledge, armed with a Bible and a study book.

Church Sessions include *Presbyterian Woman*. Church secretaries slave for them. Husbands despair for them, and heaven protects them.

A *Presbyterian Woman* is a dreamer and a worker, dreaming great dreams for her children, her church and her country and she's working to make those dreams come true. She's a link with the past, a powerful force in the present and an investment in the future.

From: *Cornucopia of Prayer, Praise, Projects, Programs* by Presbyterian Women of Presbytery of Giddings -Love joy, Synod of Mid America, 1991-1992, Katherine Kilpatric, Co Moderator.

We are looking for volunteers to help with the Nativity Celebration. We need 6 volunteers during each 3 hour block. If this is something you would be interested in helping with you can sign up using the QR code below.



Ladies save the date for the annual Presbyterian Women's Christmas Luncheon on Friday, December 8 at 11:30am

Calling all creatives

Advent Artwork

We invite you to create & submit Advent themed artwork for our annual Advent Booklet:

Reflections of the Season

Submissions should be flat (or suitable for paper reproductions.)

Due Date: November 5th

Questions?

Geneva Baxley

gbaxley@firstpresbeaufort.org



Trunk-or-Treat

Bring your ghouls & goblins for an unforgettable sugar rush.

Please also bring a donation of canned goods.

October 25th
6pm

Costumes encouraged!

Participants, please park in the Sanctuary parking lot or along the street. Education building parking lot will be used for T-o-T





Please join us October 22nd

at 11:00am

Stony Creek Worship Service

**FPC will provide chicken & drinks.
Please BYO chairs (and table if you'd like)
& a side dish to share!**

Directions to Stony Creek Chapel in McPhersonville

From Beaufort, take Highway 21 to Gardens Corner.

Turn left onto Highway 17 South.

Go 6.3 miles.

At Pocotaligo, veer right at the exit ramp on to Highway 17A.

Continue toward Walterboro for 3.5 miles.

At Harold's Country Club, turn left onto Pocotaligo Road.

(Do not go past Harold's)

Travel exactly 4 miles.

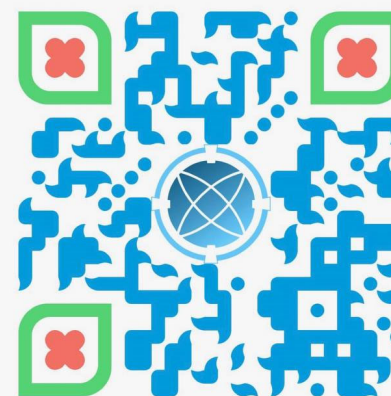
You will see a small Episcopal Church on the right.

Turn right at the church.

Stony Creek chapel is on the right at the end of the road.

The FPC floral committee invites you to provide
fresh flowers for Sunday Morning Worship

Scan here to sign up



Thank you!



12th Annual

**Nativity Celebration
December 1-3, 2023**

Calling all Nativity Lovers!

First Presbyterian Church of Beaufort
is preparing for the 12th Annual
Nativity Celebration. If you have a
nativity you would like to loan for this
beautiful community event, that is free
to the public, please contact the church
office at info@firstpresbeaufort.org or
843-524-3051.